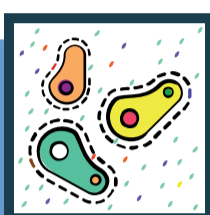


2019 Clinical Trials at King's Health Partners

Leading clinical research



57,102

patients took part in clinical studies at our partner trusts last year, representing a 34% year-on-year increase.

South London and Maudsley NHS Foundation Trust are the top Trust in the country for participant recruitment to mental health studies with

21,133 participants.



Guy's and St Thomas' NHS Foundation Trust supported

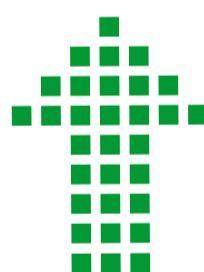
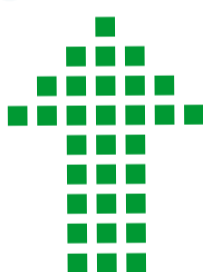
567 research studies

making it top in the country in this metric. The Trust recruited 19,522 research participants in 2018-2019.

King's College Hospital NHS Foundation Trust recruited

19,712 participants

to research in the last year, representing a 20% increase compared to the previous year and placing the Trust in the top 10 in the country.



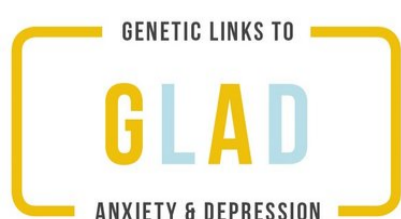
As an Academic Health Sciences Centre, our purpose is to translate cutting-edge research into excellent patient care. We know there is a clear correlation between the numbers of patients entering into trials and better clinical outcomes, so I am delighted to see that our trusts are continuing to lead clinical research.

**Prof Sir Robert Lechler,
Executive Director, King's Health Partners**



Largest depression and anxiety study launched

We're called on 40,000 people with depression or anxiety to join the online Genetic Links to Anxiety and Depression (GLAD) Study to help increase understanding of these disorders and improve the lives of future patients.



Cognitive Behavioural Therapy for Irritable Bowel Syndrome

We published the largest study of its kind on how telephone and web-based Cognitive Behavioural Therapy for Irritable Bowel Syndrome could be more effective than standard care.

